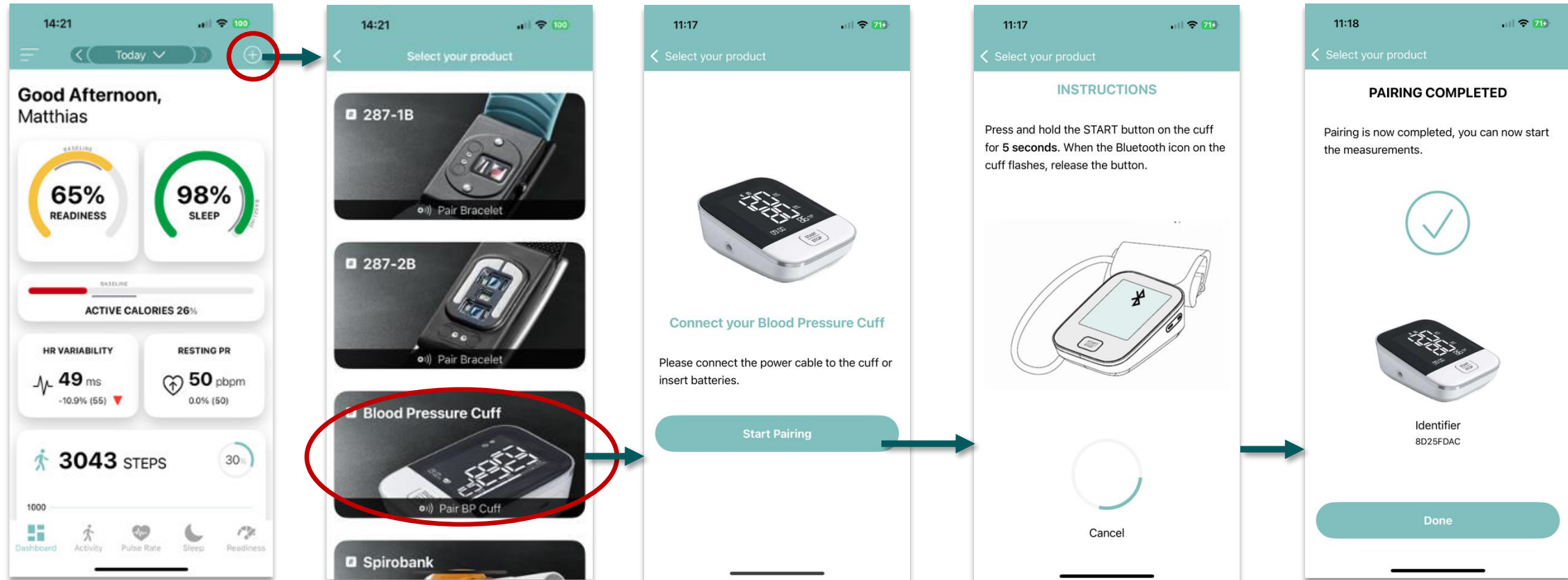


# 1) NIBP – Pair a BP cuff device

Add a Corsano BP cuff device to the Corsano App



1) Press  right top corner to go to Settings

2) Select BP Cuff

3) Press [Start Pairing]



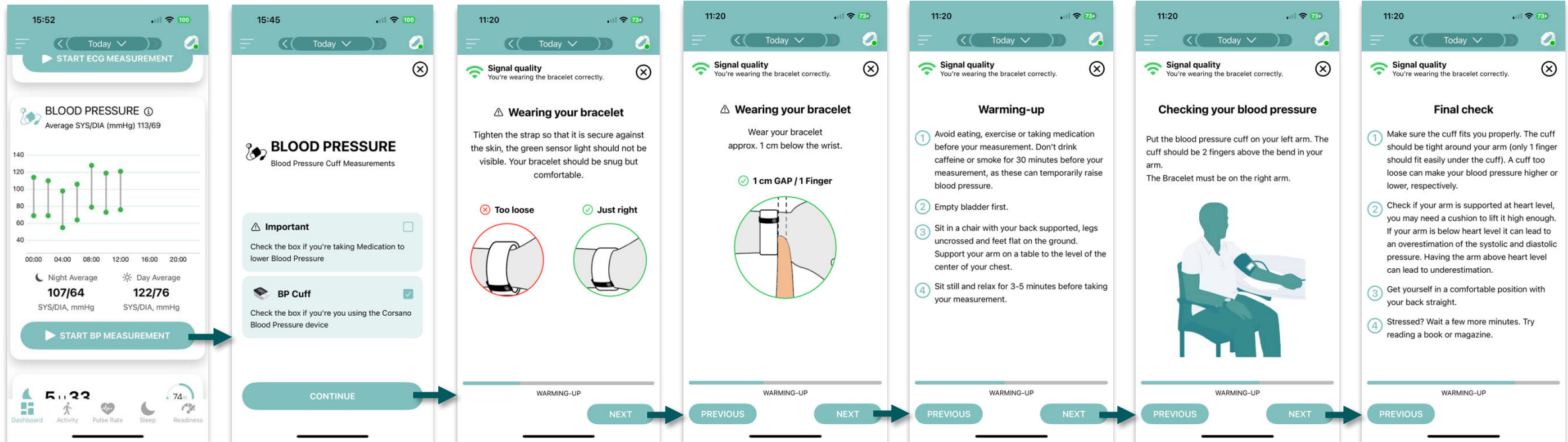
Don't press the Start button of the Cuff monitor

4) Follow instructions. Press "Cancel" to abort the pairing process and try again.

5) BP cuff pairing success. Make sure this is your device by visually checking the identifier number on the Cuff monitor.

# 2) NIBP – BP cuff measurement

Follow these steps to perform a BP cuff measurement - Instructions



1) Press [Start BP Measurement] from the Dashboard

2) Tick the box if you take medication to lower Blood Pressure.

3) Follow the instructions to properly adjust the tightness of the bracelet.

4) Follow the instructions to properly adjust the position of the bracelet.

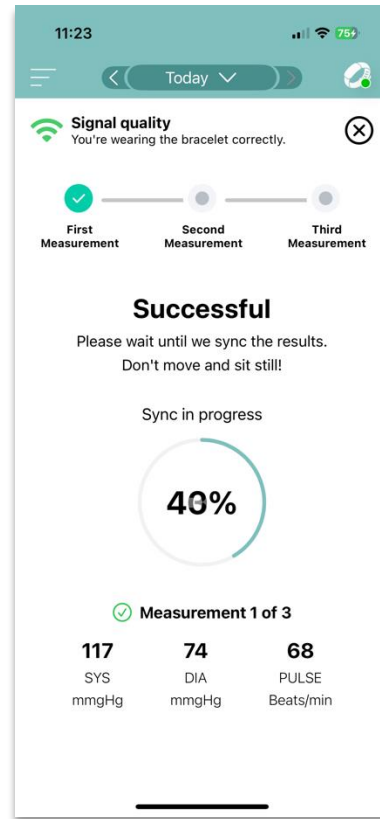
5) Prepare for the Blood Pressure Cuff measurement. Sit and follow the instructions.

6) Rest your arm on a table at the same level as your heart.

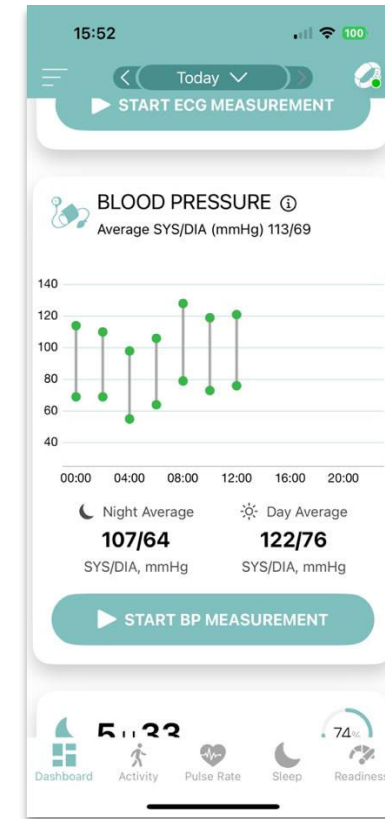
7) Check the tightness of the Cuff. Sit still, don't move and relax.

# 3) NIBP – BP cuff measurement

Follow these steps to perform a BP cuff measurement - Measurement



**x3**  
 Repeat the measurement 2 more times

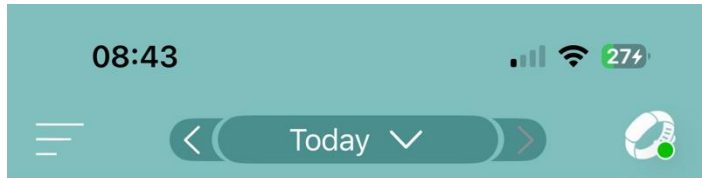


**1) Press the [START] button on the Cuff monitor.  
 The Cuff will inflate and measure your Blood Pressure.  
 Wait for the measurement to finish. This takes about 30s.**

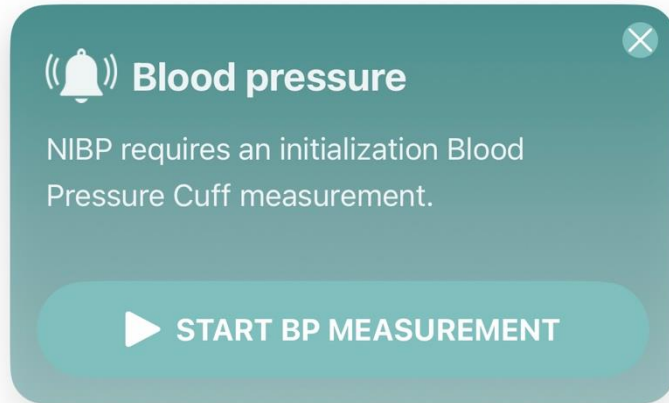
**2) After completion of the third measurement, the Non-Invasive Blood Pressure is calibrated.  
 The result of the calibration is available in the APP.**

# 4) NIBP – Messages

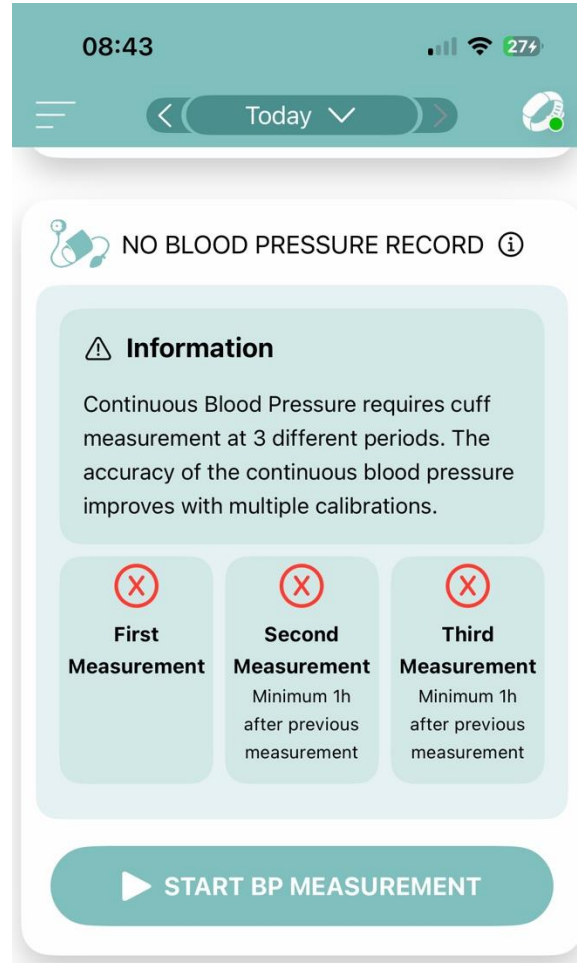
Initial setup, day 1 - No BP cuff init



**Good Morning,  
Matthias**



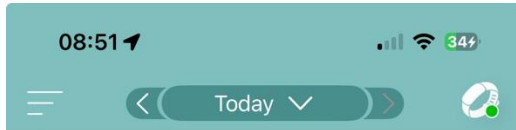
Alert message on top of the dashboard



Detail message with init status in the BP cell

# 5) NIBP – Messages

Initial setup - One or more BP cuff init done



Good Morning,  
Matthias

### Blood pressure

Continuous Blood Pressure requires cuff measurement at 3 different periods. The accuracy of the continuous blood pressure improves with multiple calibrations.

<b>First Measurement</b>	<b>Second Measurement</b>	<b>Third Measurement</b>
2 Oct 24 08:48 Success	Minimum 1h after previous measurement	Minimum 1h after previous measurement

**START BP MEASUREMENT**

Alert message on top of the dashboard, with details

09:41 65%

NO BLOOD PRESSURE RECORD ⓘ

**Information**

Continuous Blood Pressure requires cuff measurement at 3 different periods. The accuracy of the continuous blood pressure improves with multiple calibrations.

<b>First Measurement</b>	<b>Second Measurement</b>	<b>Third Measurement</b>
2 Oct 24 08:48 Success	Minimum 1h after previous measurement	Minimum 1h after previous measurement

120  
100  
80  
60  
40

00:00 04:00 08:00 12:00 16:00 20:00

Night Average - Day Average

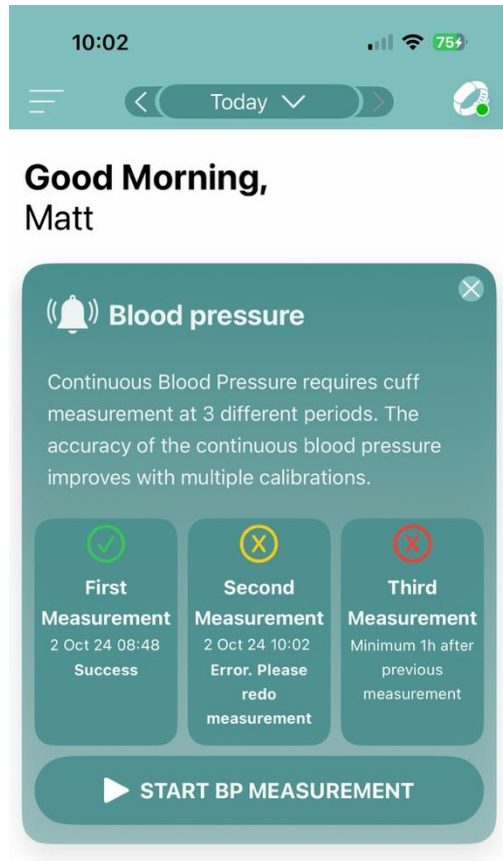
**108/69**  
SYS/DIA, mmHg

**START BP MEASUREMENT**

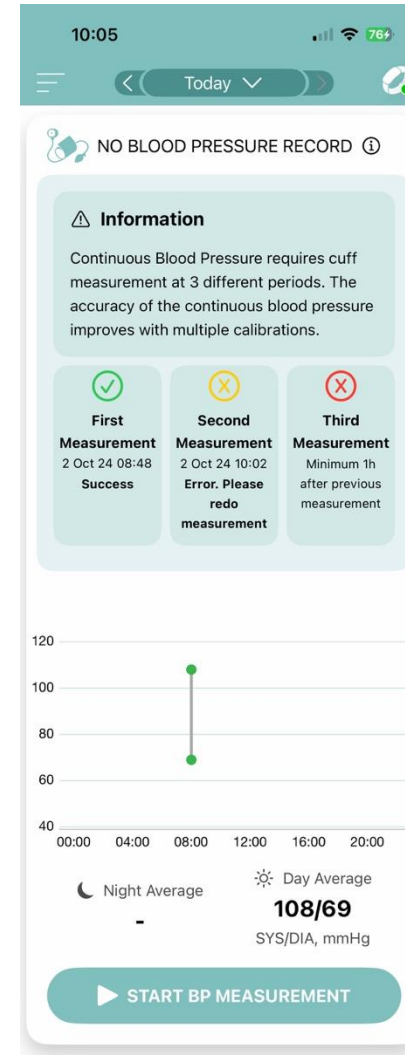
Detail message with init status in the BP cell.  
First init measurement done.  
Continuous Blood Pressure will start coming.

# 6) NIBP – Messages

Initial setup,- One or more BP cuff init done, with error.



Alert message on top of the dashboard,  
With details



Detail message with init status in the BP cell.  
First init measurement done.  
Second init measurement with error.  
Continuous Blood Pressure start coming.